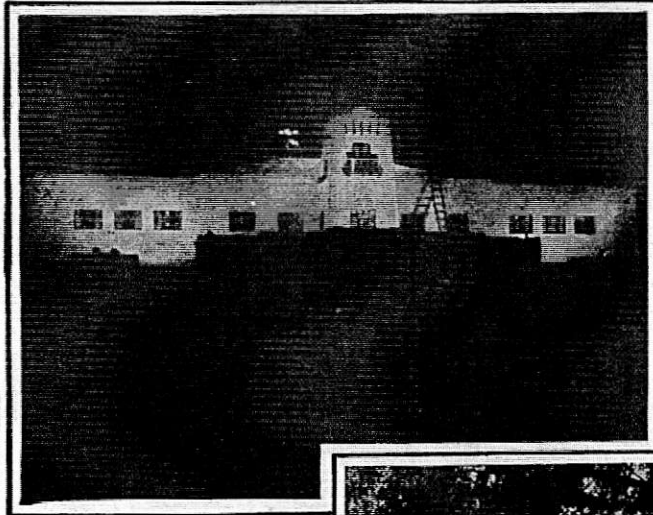
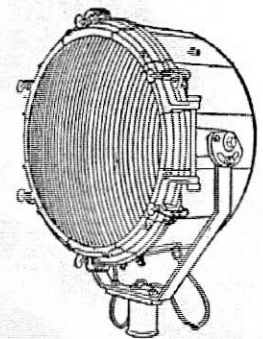
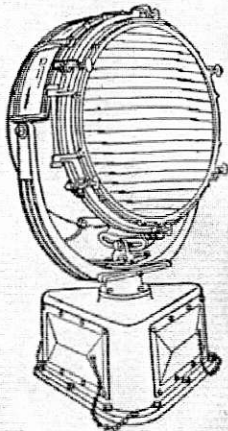


THE PHOENIX AIRPORT



The airport at Phoenix, Arizona, which is operated by the Scenic Airways, Inc., is illuminated for night operation with Crouse-Hinds lighting equipment.

A Type DCB revolving beacon guides the flyers to the airport. Type VAP obstacle, boundary, and approach lights mark the obstructions, the outline of the field, and the runways.



Type LCA and Type TTE Floodlights illuminate the exterior of the hangar and the administration building giving the pilot additional perspective and a bank of six DCE24 Floodlights illuminate the landing field with a flood of light permitting the pilot to make as easy a landing as if it had been daylight.



SALES OFFICES

NEW YORK PHILADELPHIA
BOSTON DETROIT ATLANTA
PITTSBURGH SAN FRANCISCO

CROUSE-HINDS

ESTABLISHED 1897

SYRACUSE, N. Y. U. S. A.



SALES OFFICES

CHICAGO CLEVELAND
MILWAUKEE ST. LOUIS CINCINNATI
MINNEAPOLIS LOS ANGELES

C-H468

CONDULETS GROUNDULETS PLUGS AND RECEPTACLES FLOODLIGHTS TRAFFIC SIGNALS
AIRPORT AND AIRWAY LIGHTING EQUIPMENT PANELBOARDS AND CABINETS SWITCHES